

www.oder-events.de

KLEIST FORUM

TECHNICAL FACTS & FIGURES



MESSE UND VERANSTALTUNGS GMBH
FRANKFURT (ODER)

KLEIST FORUM

BOOKING ENQUIRIES

Michel Lahayn

Telephone +49 (0)335 4010-204

E-mail m.lahayn@muv-ffo.de

TECHNICAL MANAGEMENT

Stefan Welker

Telephone +49 (0)335 4010-500

E-mail s.welker@muv-ffo.de

Fax +49 (0)335 4010-145

LOCATION

Platz der Einheit 1

15230 Frankfurt (Oder)

Germany



KLEIST FORUM

Architecture flooded with natural light
The multi-talent for all kinds of events

01

The diverse areas and rooms and modern glass façades of the Kleist Forum create a bright and dynamic spatial structure and provide an inspiring atmosphere for thinking and working – constantly accompanied by a view of the building's natural green surroundings.

02

Do you need a full theatre stage for your on-stage programme, a gallery flooded with natural light for your product presentation or individual function rooms with plenty of windows for your training event? The Kleist Forum offers all kinds of spaces for all kinds of events, with capacities ranging from 7 to 700 guests.



FESTIVALS
PANEL DISCUSSIONS
STAGE EVENTS
CONGRESSES/CONFERENCES
PRESENTATIONS

03

Be it tiered seating or a level surface with banquet tables, our “Großer Saal” hall offers you maximum flexibility for your event.



04

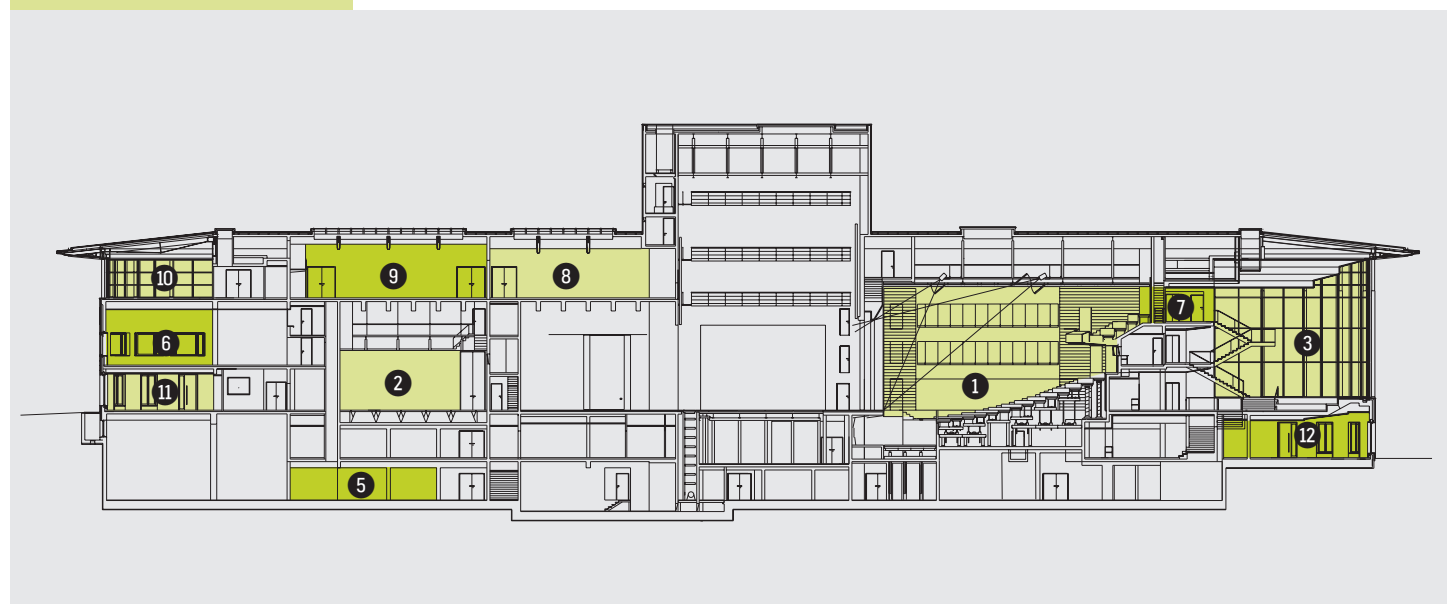
The elegant yet cosy “Schrof-fensteins” and “Darstellbar” lounges are the perfect locations for celebrations with a small number of guests. The Forum also offers a spacious terrace for open-air receptions.

ROOM	SIZE in m ²	ROW	CLASSROOM	U-SHAPED	BOARDROOM	BANQUET	STANDING RECEPTION	SPECIAL FEATURES
① "Großer Saal" hall	720	575	140	56	44	230/410	255	Floor or tiered row seating available full theatre stage
② Studio stage	166	99	72	38	30	90	105	Stage: 12 x 7 m
③ Foyer	270	119	34	36	34	70	110	Semi-circular 2 tiers glass façade from which you can hang a banner bar
④ "Wandelhalle" hall	400	–	–	–	–	170	160	71 m long glass façade
⑤ Conference room 1	108	102	48	46	44	50	70	Ground floor can be divided into 4 individual rooms natural light
⑥ Conference room 2	215	180	96	38	32	140	155	2nd floor semi-circular natural light interpreting booths
⑦ Conference room 3	45	–	–	–	16	–	–	3rd floor natural light
⑧ Conference room 4a	170	135	60	36	32	90	115	4th floor connecting door to 4b glass roof windows (can be blacked out)
⑨ Conference room 4b	220	167	80	38	32	90	135	4th floor connecting door to 4a glass roof windows (can be blacked out)
⑩ Conference room 4c	131	75	38	18	32	70	75	Semi-circular natural light
⑪ "Schroffensteins"	115	–	–	18	28	50	60	Restaurant with an adjacent bar and kitchen area terrace disabled toilet
⑫ "Darstellbar" lounge	100	–	–	–	–	20	45	Separate entrance and toilets staffed bar possible

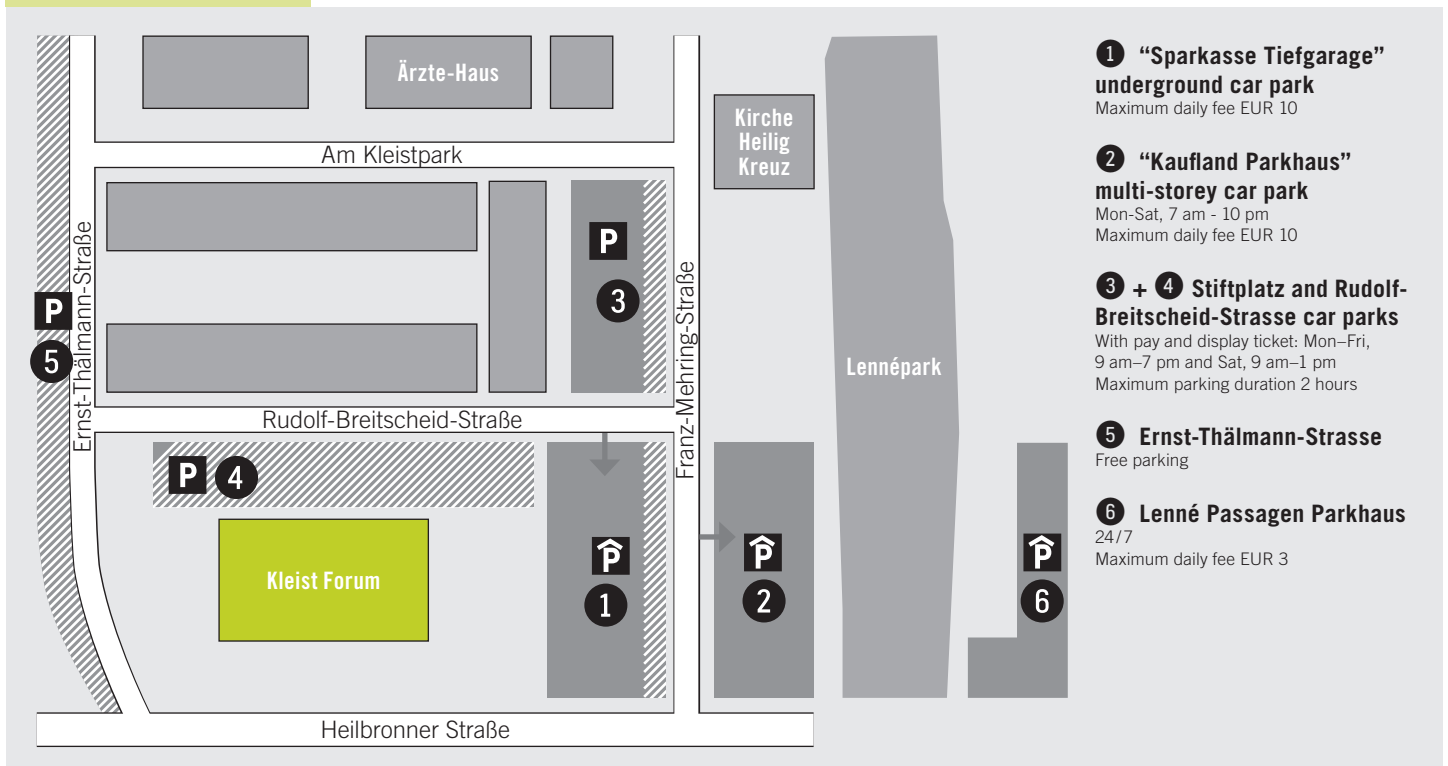
P In the city centre, "Parkhaus Sparkasse" car park
  621
 L: 13
G: 6 + 11
 L: 1
G: 1




North side longitudinal section



Parking at the Kleist Forum



1 “Sparkasse Tiefgarage” underground car park
Maximum daily fee EUR 10

2 “Kaufland Parkhaus” multi-storey car park
Mon-Sat, 7 am - 10 pm
Maximum daily fee EUR 10

3 + 4 Stiftplatz and Rudolf-Breitscheid-Strasse car parks
With pay and display ticket: Mon-Fri, 9 am-7 pm and Sat, 9 am-1 pm
Maximum parking duration 2 hours

5 Ernst-Thälmann-Strasse
Free parking

6 Lenné Passagen Parkhaus
24/7
Maximum daily fee EUR 3

“Großer Saal” hall	Details
Size	720 m ²
Capacity	Row seating 575 Classroom seating 140 U-shaped seating 56 Boardroom seating 44 Banquet seating 230/410 Standing reception 255
Clear height	9.96 m
Flooring	Wooden parquet
Stage ceiling load-bearing capacity	2 hall hoists, 300 kg each; 2 podium hoists, 300 kg each
Power (lighting)	6 x Powerlock 400 V 3-phase 20 x direct 230 V 16 A sockets 118 x dimmable circuits
Power (sound)	1 x 400 V 32 A 24 x 230 V 16 A Schuko 1 x 400 V 125 A 4 x 400 V 32 A 4 x 400 V 16 A
Extras	Full theatre stage, floor or tiered row seating possible (lifting podiums)
Most frequent event types	Stage programmes (theatre, opera, drama, etc.)

Foyer	Details
Size	270 m ²
Capacity	Row seating 119 Classroom seating 34 U-shaped seating 36 Boardroom seating 34 Banquet seating 70 Standing reception 110
Clear height	9.70 m
Flooring	Wooden parquet
Power	3 x 400 V 32 A 2 x 230 V 16 A Schuko 1 x 400 V 16 A temporary
Extra features	Semi-circular, glass façade, on three levels, first floor
Most frequent event types	Press conferences, panel discussions on a small stage, parties

“Wandelhalle” hall	Details
Size	400 m ²
Capacity	Banquet seating 170 Standing reception 160
Clear height	5.20 m
Flooring	Marble
Power	7 x 230 V 16 A Schuko 1 x 400 V 32 A
Extra features	71 m long, glass façade, first floor
Most frequent event types	Exhibitions, product presentations, weddings

Studio stage	Details
Size	166 m ²
Capacity	Row seating 99 Classroom seating 72 U-shaped seating 38 Boardroom seating 30 Banquet seating 90 Standing reception 105
Clear height	6.40 m
Flooring	parquet flooring
Ceilingload-bearing capacity	8 chain hoists, 125 kg each
Power (lighting)	6 x 400 V 32 A CEE direct 12 x 230 V 16 A Schuko 114 x dimmable circuits
Power (sound)	6 x 230 V 16 A Schuko
Extra features	2 x additional dressing rooms for performers, internal, access to backstage area, ground floor
Most frequent event types	Stage performances

“Schroffensteins” lounge	Details
Size	115 m ²
Capacity	U-shaped seating 18 Boardroom seating 28 Banquet seating 50 Standing reception 60
Flooring	Wooden parquet
Power	4 x 230 V 16 A Schuko 1 x 400 V 16 A 3-phase
Extra features	Semi-circular, bar, terrace, 4 separate toilets, additional disabled toilet, ground floor
Most frequent event types	Company parties, weddings, private parties

“Darstellbar” lounge	Details
Size	100 m ²
Capacity	Banquet seating 20 Standing reception 45
Flooring	Wooden parquet
Power	4 x 230 V 16 A Schuko 1 x 400 V 16 A 3-phase
Extra features	Semi-circular, bar, separate access, 2 separate toilets, ground floor
Most frequent event types	Small concerts, private parties, small company parties

Conference room 1	Details
Size	108 m ²
Capacity	Row seating 102 Classroom seating 48 U-shaped seating 46 Boardroom seating 44 Banquet seating 50 Standing reception 70
Clear height	2.84 m
Flooring	Carpet
Power	6 x 230 V 16 A Schuko 5 x 230 V 16 A EDV
Extra features	Can be divided into 4 individual rooms, access to the park, projector, screen, ground floor
Most frequent event types	Training sessions, board meetings

Conference room 2	Details
Size	215 m ²
Capacity	Row seating 180 Classroom seating 96 U-shaped seating 38 Boardroom seating 32 Banquet seating 140 Standing reception 155
Clear height	4.10 m
Flooring	Wooden parquet
Power	7 x 230 V 16 A Schuko 5 x 230 V 16 A EDV
Extra features	Semi-circular, diameter: 15 m, can be blacked out, interpreting equipment, second floor
Most frequent event types	Weddings, receptions, press conferences, annual general meetings

Conference room 3	Details
Size	45 m ²
Capacity	Boardroom seating 16
Clear height	5.20 m
Flooring	Wooden parquet
Power	4 x 230 V 16 A Schuko
Extra features	Can be blacked out, third floor, Hybride Konferenztechnik fest installiert
Most frequent event types	Press conferences, receptions

Conference room 4a	Details
Size	170 m ²
Capacity	Row seating 135 Classroom seating 60 U-shaped seating 36 Boardroom seating 32 Banquet seating 90 Standing reception 115
Clear height	3.30 m
Flooring	Wooden parquet
Power	4 x 230 V 16 A Schuko 1 x 230 V 16 A EDV
Extra features	Can be blacked out, acoustic walls, connected to 4b, fourth floor
Most frequent event types	Christmas parties, gatherings, workshops, receptions

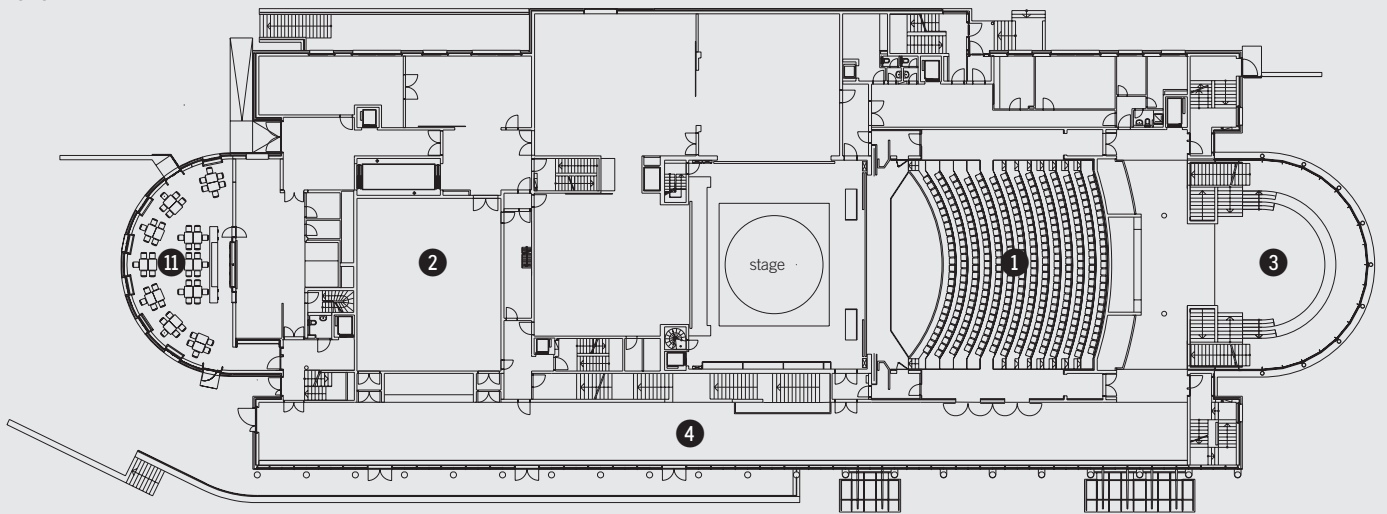
Conference room 4b	Details
Size	220 m ²
Capacity	Row seating 167 Classroom seating 80 U-shaped seating 38 Boardroom seating 32 Banquet seating 90 Standing reception 135
Clear height	3.30 m
Flooring	Wooden parquet
Power (sound)	3 x 230 V 16 A Schuko 1 x 230 V 16 A EDV
Extra features	Can be blacked out, acoustic walls, connected to 4a, fourth floor
Most frequent event types	Christmas parties, gatherings, workshops, receptions

Conference room 4c	Details
Size	131 m ²
Capacity	Row seating 75 Classroom seating 38 U-shaped seating 18 Boardroom seating 32 Banquet seating 70 Standing reception 75
Clear height	4 m
Flooring	Linoleum
Power (sound)	3 x 230 V 16 A Schuko
Extra features	Semi-circular, 15 m diameter, directly connected kitchen, glass façade, fourth floor
Most frequent event types	Workshops, receptions, get-togethers, buffets

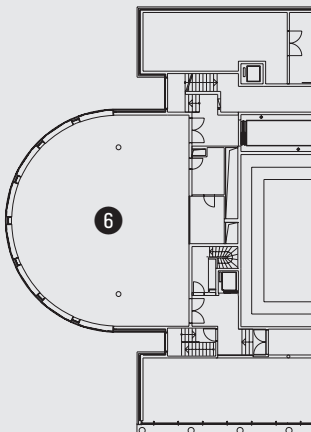
Backstage	Details
Loading doors	Height: 27 m, width: 17.5 m
Loading area	1 truck
Capacity	10 individual dressing rooms with a shower, toilet, mirror and couch 4 changing rooms with 30 lockers, including a shower and toilet 2 tuning rooms
Catering	Available
Toilets	3
Extra features	Side stage and storage area with additional power outlets

Building complex levels 1+2+4

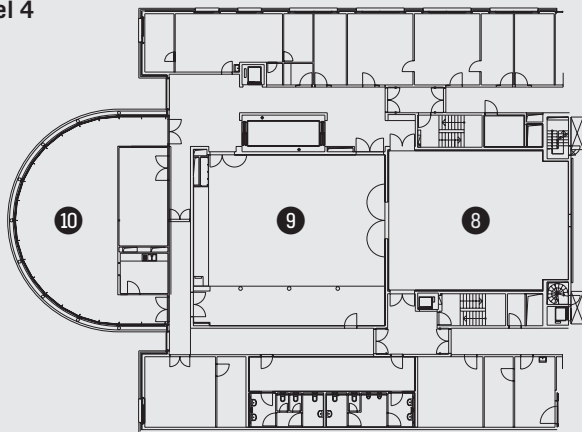
Level 1



Level 2

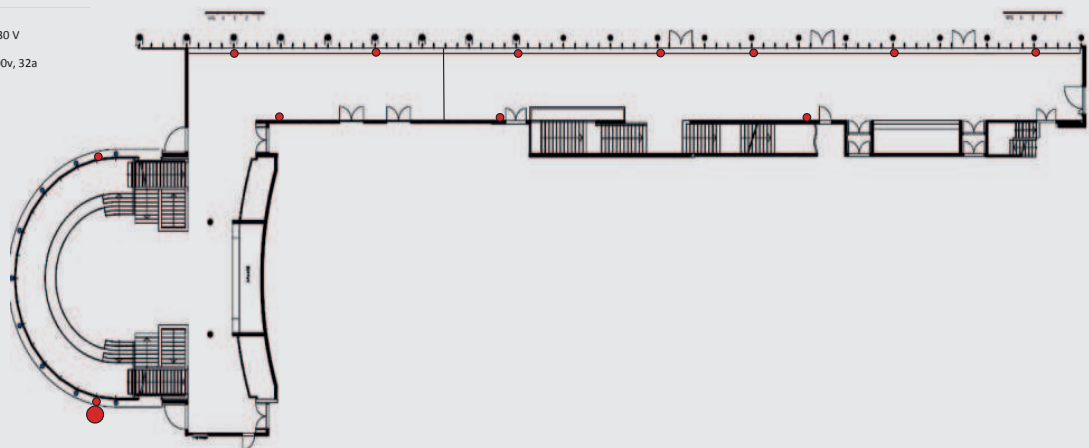


Level 4

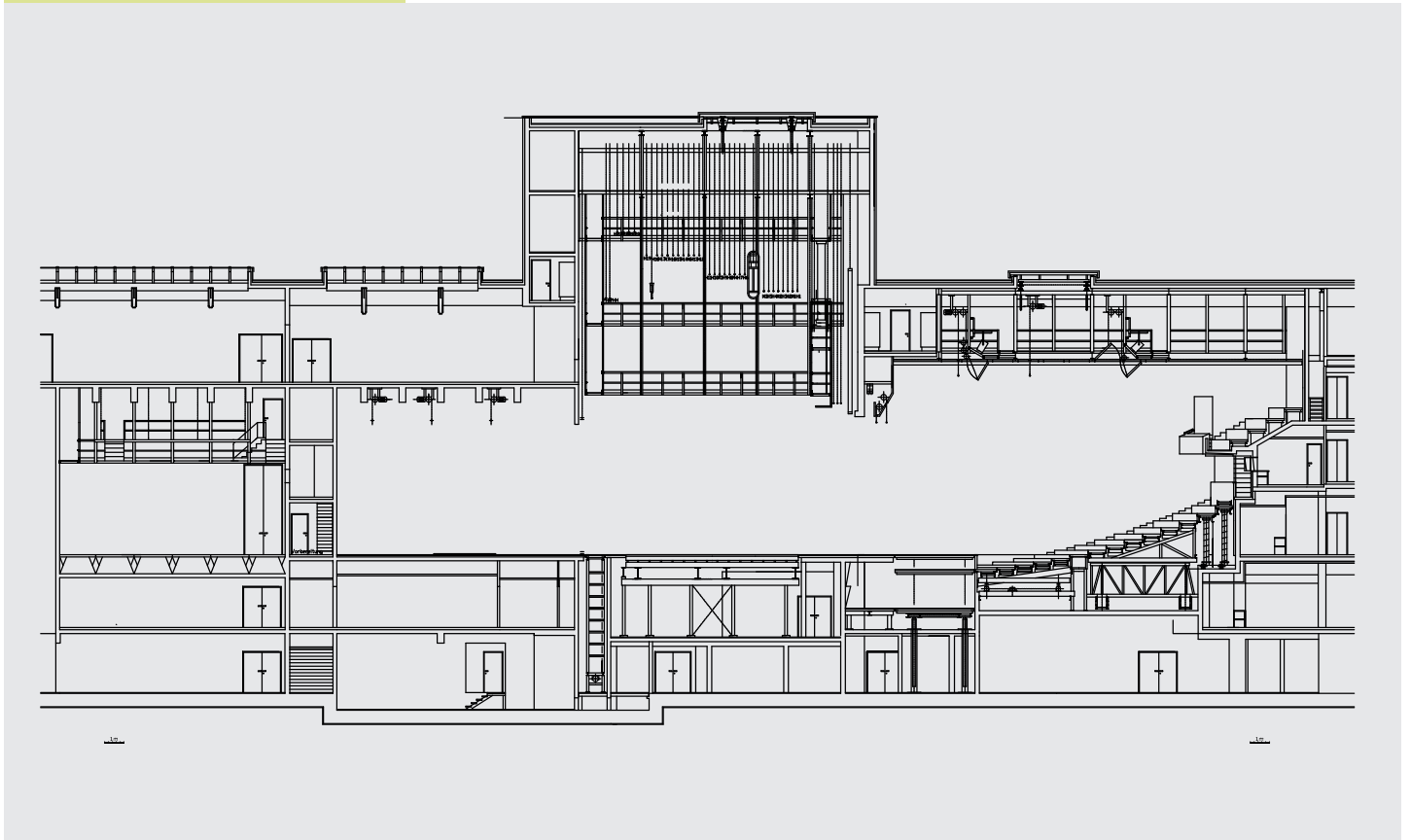


“Wandelhalle” hall

- 230 V
- 400V, 32a



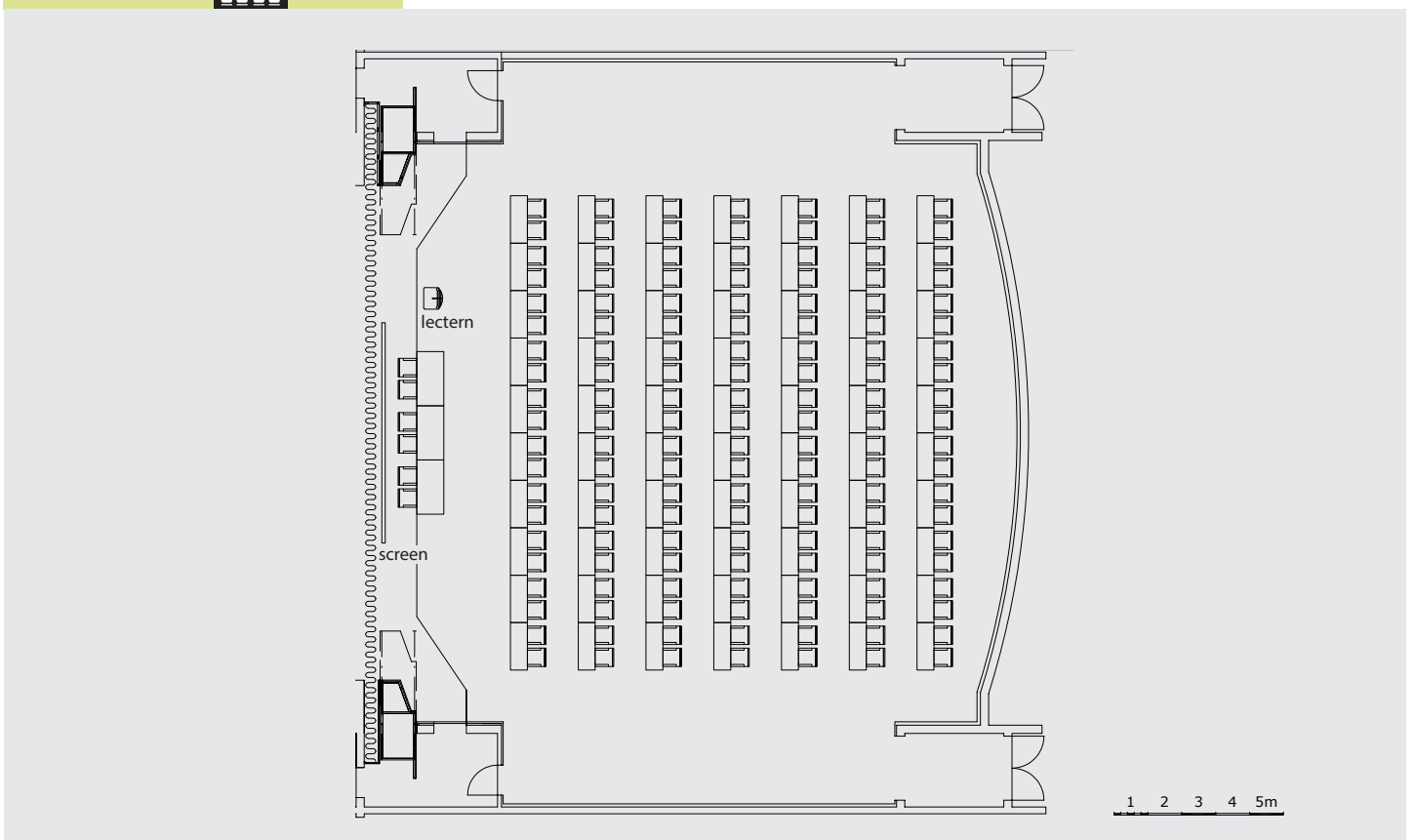
Stage, backstage and side stage, hall



“Großer Saal” hall



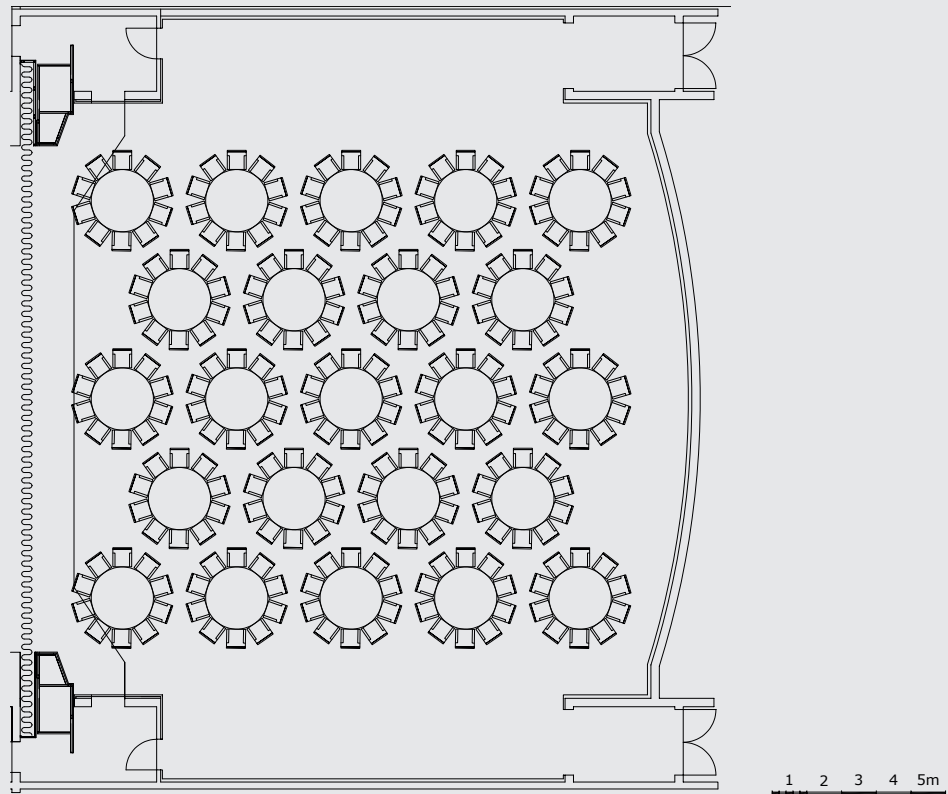
140 seats



“Großer Saal” hall



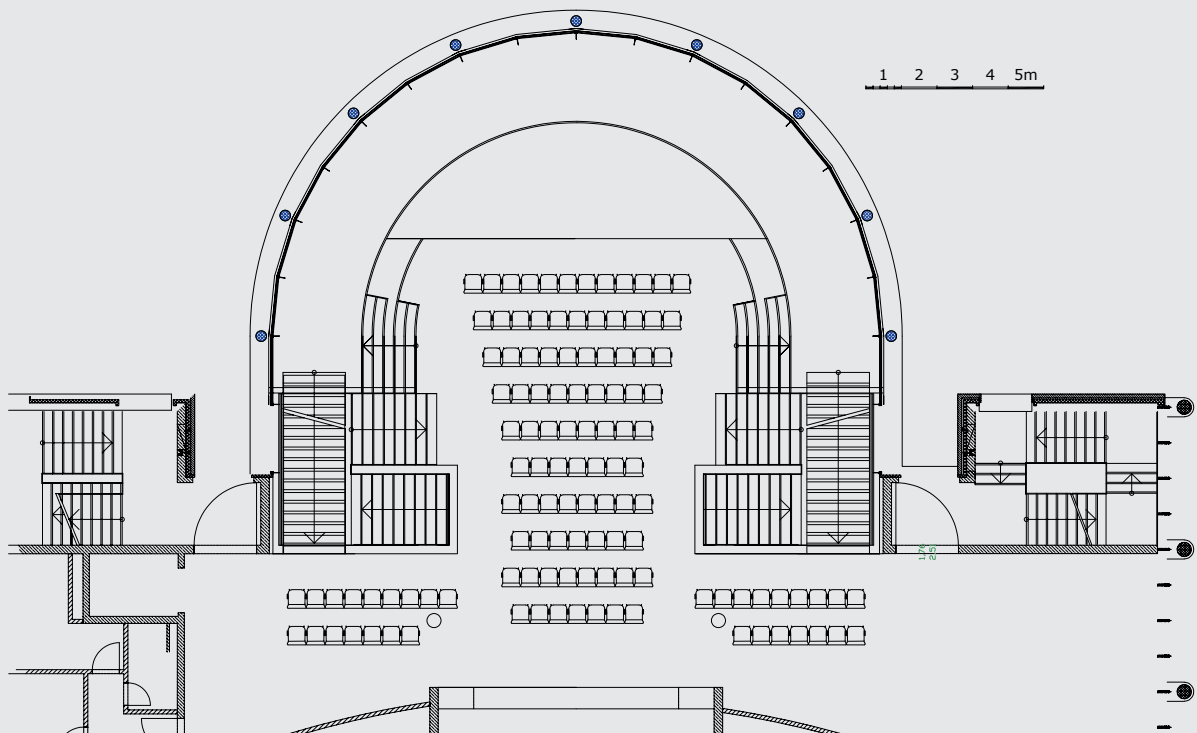
230 seats



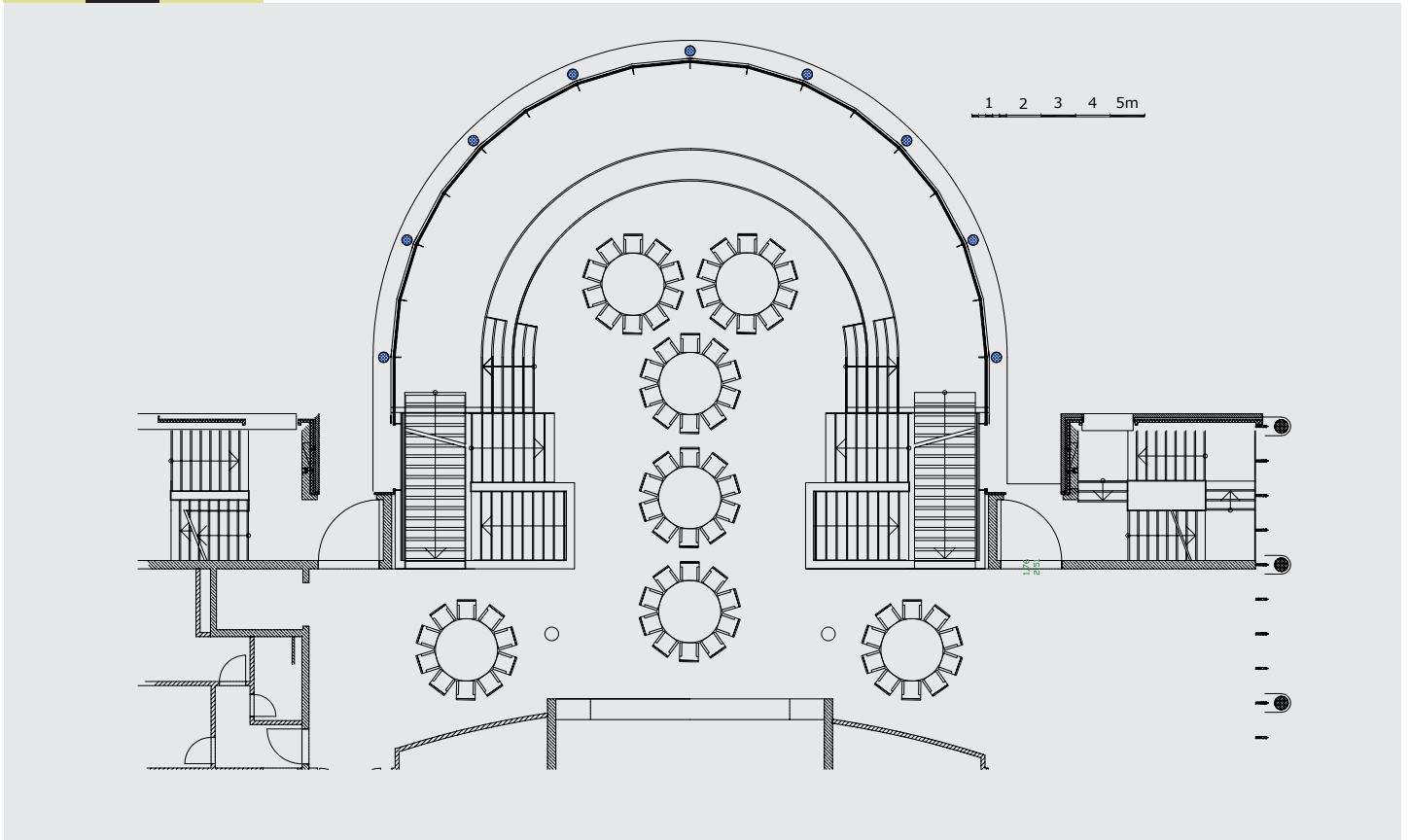
Foyer



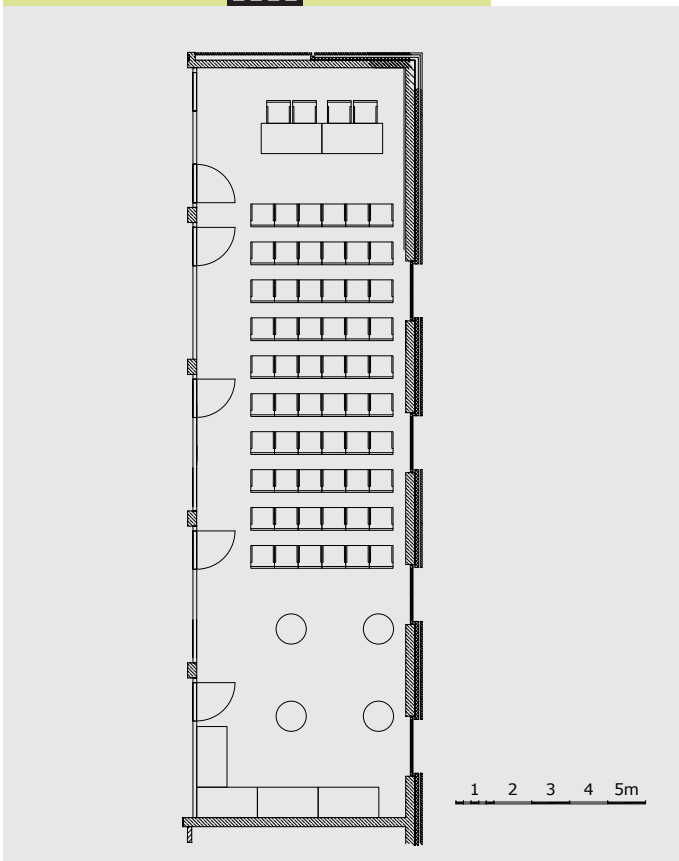
119 seats



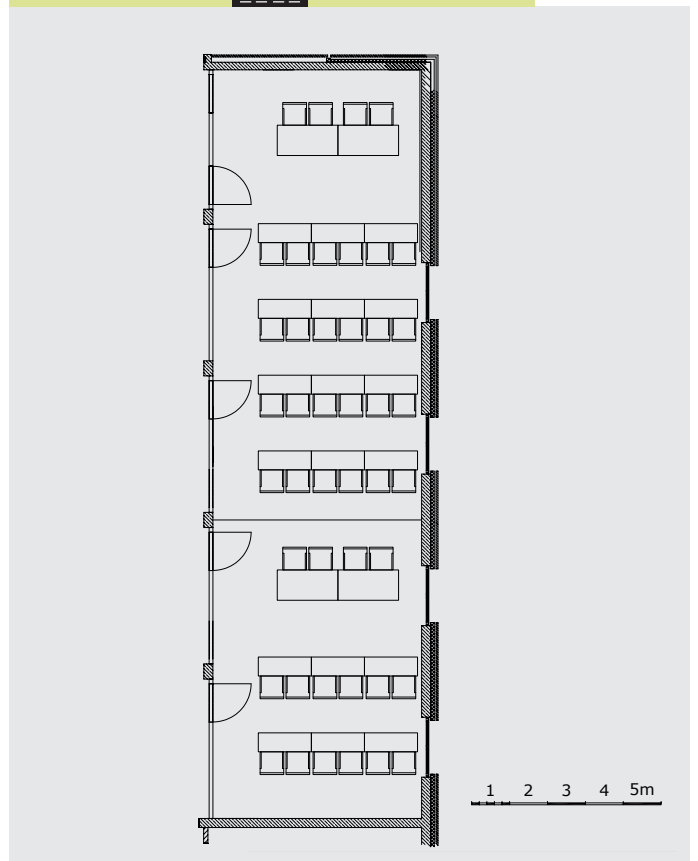
Foyer  70 seats



Conference room 1  48 seats + Buffet



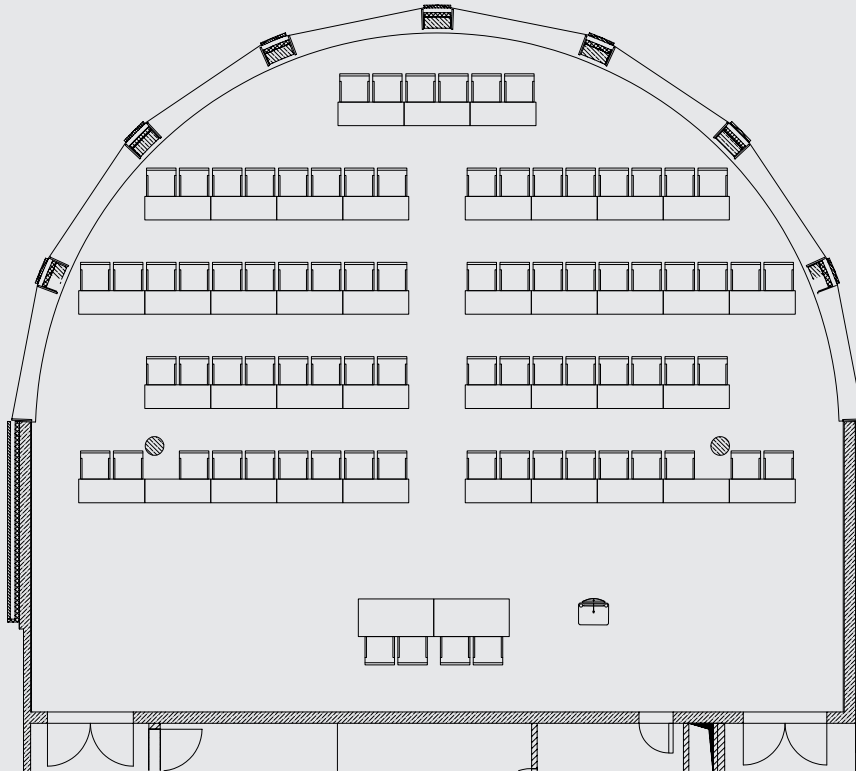
Conference room 1  divided 24 + 12 seats



Conference room 2



96 seats

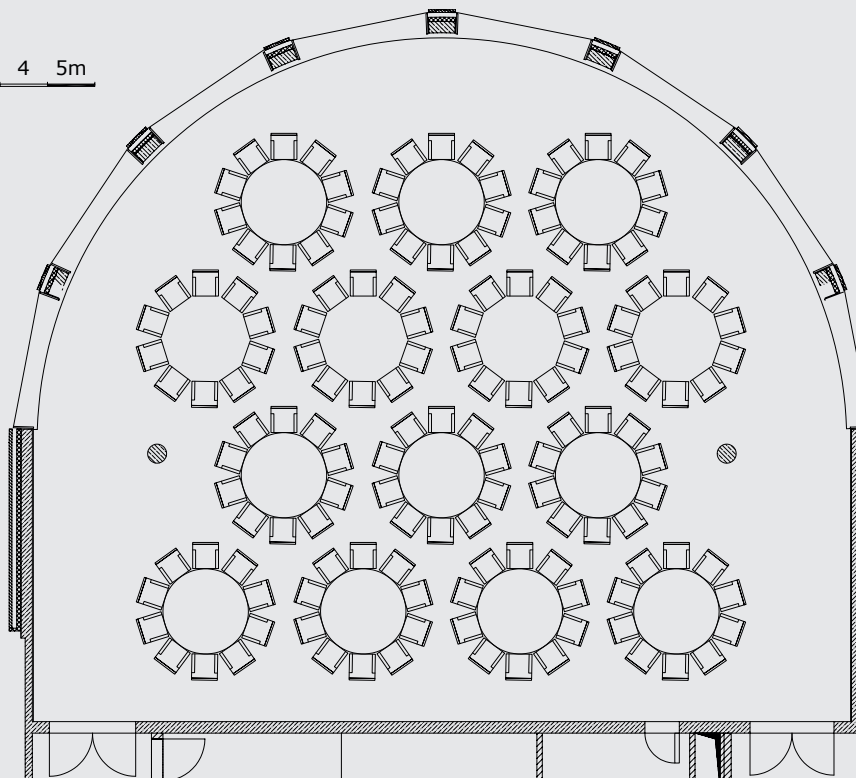


Conference room 2



140 seats

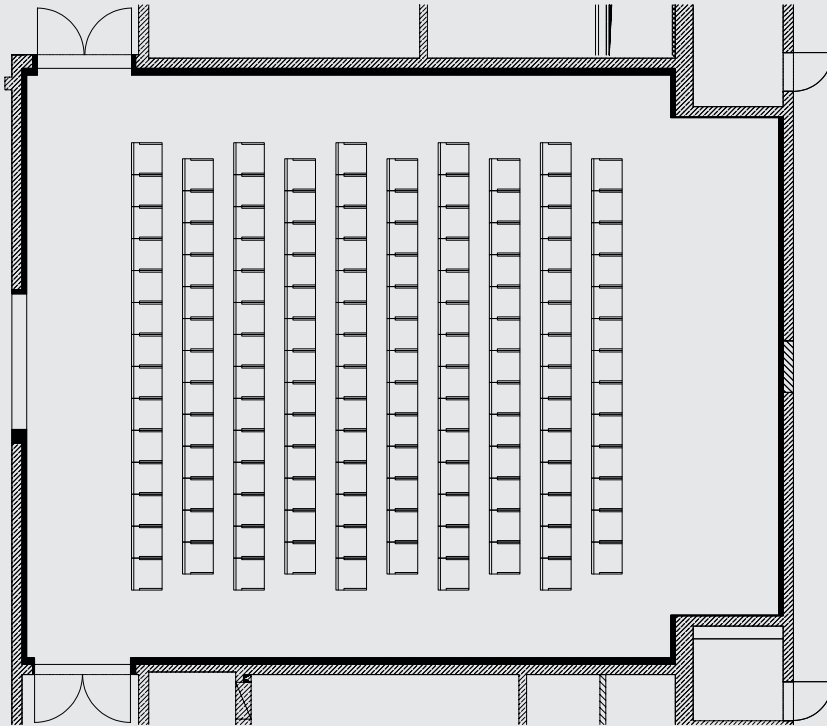
1 2 3 4 5m



Conference room 4a



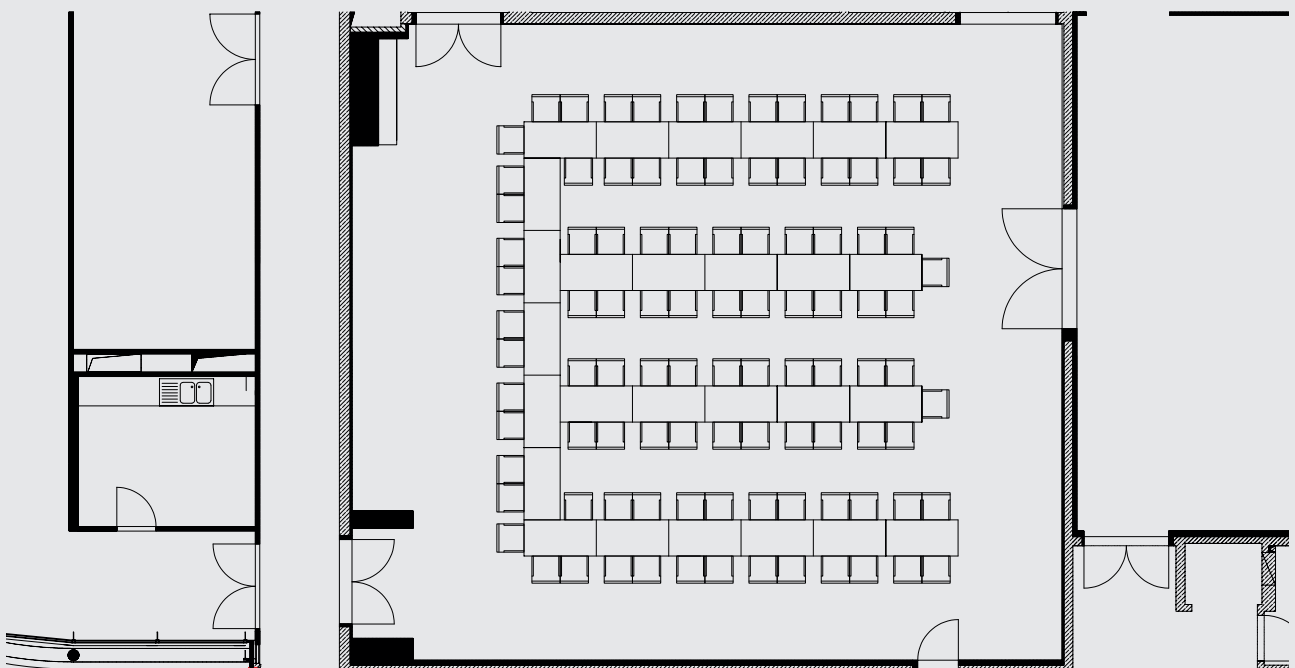
135 seats



Conference room 4b



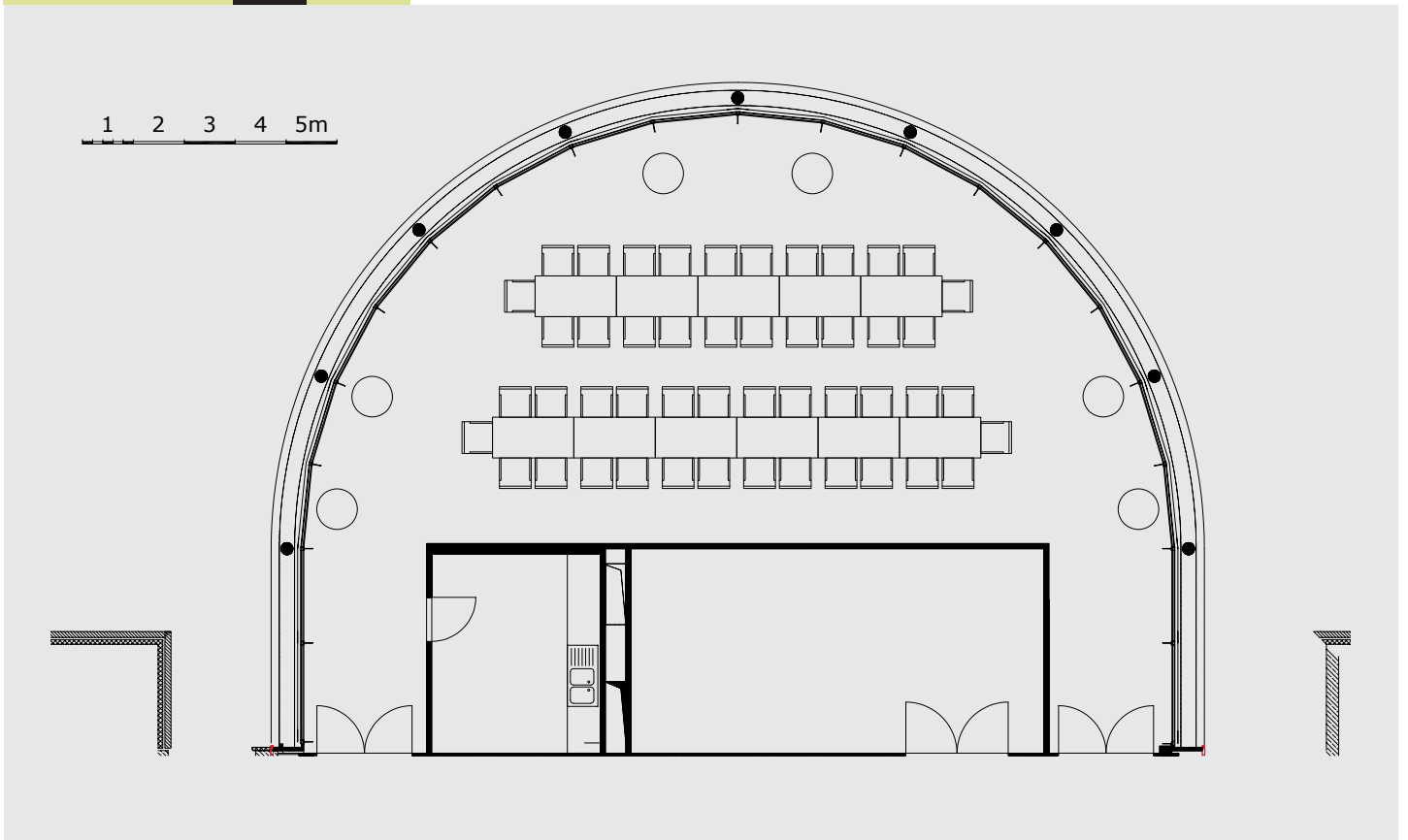
100 seats



Conference room 4c



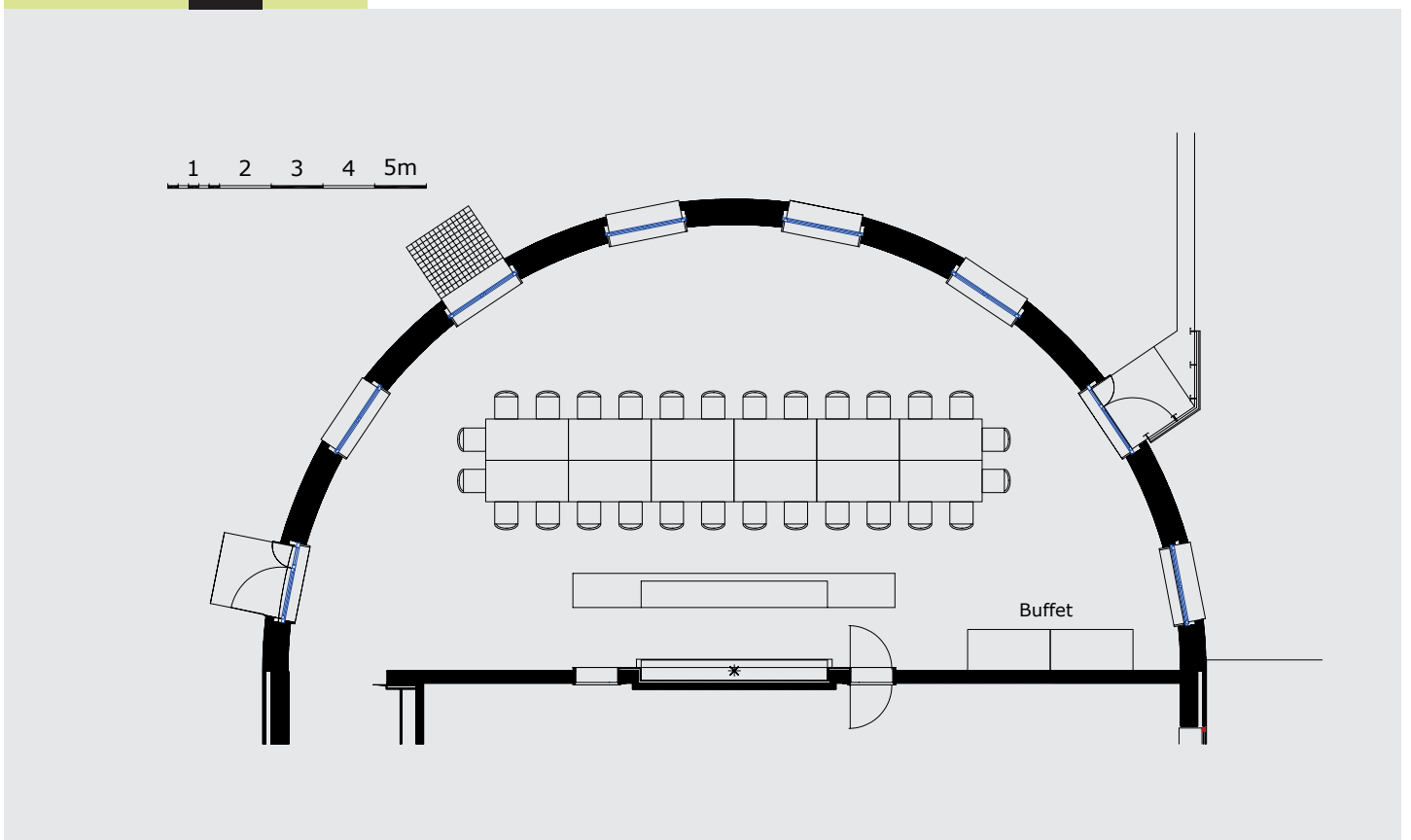
48 seats



Schroffensteins



28 seats





KLEIST FORUM

TECHNISCHE FAKTEN

WE
LOOK FORWARD
TO SEEING YOU
SOON!



MESSE UND VERANSTALTUNGS GMBH
FRANKFURT (ODER)

Platz der Einheit 1
15230 Frankfurt (Oder)
Germany
Tel. +49 335 4010 204
m.lahayn@muv-ffo.de

www.kleistforum.de
www.oder-events.de

PHOTOS Artur Kozłowski | Messe und Veranstaltungen GmbH |
MÖLLER PRO MEDIA® GmbH